



TOYOTA

ALWAYS A BETTER WAY

CARING FOR YOU AND YOUR TOYOTA DRIVER'S CARDS



YOU AND YOUR TOYOTA IN AUTUMN



Our aim is to produce the safest and most reliable cars we can. This card is designed to give you a quick and easy guide to caring for your Toyota, with simple-to-follow instructions that will help you maintain your reliable car for many years.

AUTUMN SUN

The sun is noticeably lower in the sky in autumn and can be a hazard for drivers and pedestrians. Glare and glare from the sun will be exaggerated by a dirty windscreen. Make sure the windscreen is spotlessly clean inside and out. Windscreen damage such as chips or scratches repaired. Turn on your headlights in the twilight hours between 15:00 and 20:00, while pedestrians can alert drivers much earlier of their presence by wearing reflective clothing.

WIPER BLADES MAINTENANCE

- Replace wiper blades if they smear, streak, chatter or squeak
- Check for any splits to the wiper rubbers
- Check windscreen washer reservoir levels regularly

LET YOUR AUTHORISED REPAIRER HELP

- COOLANT**
Overheating can cause serious damage to your engine. We will make sure coolant levels are correct and inspect for any leaks from the system.
- HOSES & BELTS**
We will check these are not cracked, brittle, frayed, loose or showing signs of excessive wear.
- AIR CONDITIONING & CABIN AIR FILTERS**
For the correct heating and cooling performance along with blocking air pollutants from entering the cabin, these will be inspected to maintain interior comfort and safety.
- BRAKE SYSTEM**
You should have your brakes inspected regularly. A Toyota Authorised Repairer will check your brake pads, discs and brake fluid level.

FLOOR MATS

Check the condition of the floor mats. If they are worn or damaged, they can cause damage to the car's interior. If you notice any damage to your floor mats, please contact your Toyota Authorised Repairer.

WHAT TO CARRY IN YOUR CAR IN THE WINTER



Winter places more demands on the body than at any other time of the year. The same can be said for your car - vehicle breakdowns are at their highest and road conditions can be at their most challenging. We recommend you take time to prepare your car and the items you need for safe and trouble-free driving over the cold dark months of winter.

- TORCH**
- WARNING TRIANGLE**
- FIRST AID KIT**
- MOBILE PHONE**

YOU AND YOUR TOYOTA IN SPRING



Our aim is to produce the safest and most reliable cars we can. Our spring maintenance card is a quick and easy guide to get the best out of your car. It contains simple-to-follow instructions that will help you maintain a safe and reliable car for many years.

LET YOUR LOCAL TOYOTA AUTHORISED REPAIRER HELP

- BATTERY**
We will check if connections are clean, tight and corrosion free and replace your battery if necessary.
- EXHAUST SYSTEM**
Exhaust leaks can be dangerous if not corrected quickly. We will check for leaks, damage and tighten exhaust mounts and supports.
- BRAKE SYSTEM**
The brake linings, rotors and drums should be checked at each oil change.
- HOSES & BELTS**
We will check these are not cracked, brittle, frayed, loose or showing signs of excessive wear.
- AIR CONDITIONING SYSTEM & CABIN AIR FILTER**
For correct heating and cooling performance, we will inspect these to maintain interior comfort and safety in your Toyota.
- STEERING & SUSPENSION SYSTEM**
We will check the heating and cooling performance of your car's engine and replace the oil if necessary.

CARING FOR YOU AND YOUR TOYOTA IN WINTER



TOYOTA

ALWAYS A BETTER WAY

At Toyota, we always aim to produce the safest and most reliable cars we can. Our Toyota driver's card is designed to give you a quick and easy guide to get the best out of your Toyota, with simple to follow instructions that will help you maintain a safe and reliable car for many years.

ANTI-FREEZE PRECAUTION



Always ensure your windscreen and wipers are clean and the reservoirs for windscreen and engine coolant contain anti-freeze.

WINTER TYRES



Consider fitting winter tyres as they offer better grip in slippery conditions. In severe snow and ice, carry snow chains and when required attach them to the driven wheels, but only in designated snow chain areas.

DRIVING IN SNOW



For the best traction in snow and ice, pull away in second gear and limit gear changes and dependency on your brakes.

BATTERY MAINTENANCE



Batteries are the most common cause of winter breakdowns. A battery more than five years old may struggle in the cold - get it checked and replaced if necessary before the winter months begin.

WHAT TO CARRY IN YOUR CAR IN THE WINTER



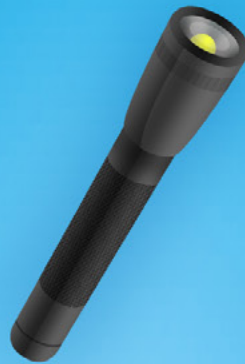
TOYOTA

ALWAYS A
BETTER WAY

Winter places more demands on the body than at any other time of the year. The same can be said for your car - vehicle breakdowns are at their highest and road conditions can be at their most challenging. We recommend you take time to prepare your car and the items you need for safe and trouble-free driving over the cold dark months of winter.



SHOVEL



TORCH



WARNING TRIANGLE



BLANKETS



FIRST AID KIT



MOBILE PHONE



TOW ROPE



BOTTLED WATER



DE-ICING EQUIPMENT

This concise chart is not intended as a replacement for the owner's manual of your vehicle or of the accessory. We advise you to carefully read through the owner's manual. Toyota accepts no liability for the content of this chart and/or for the consequences of any actions taken on the basis of the information provided.

CARING FOR YOU AND YOUR TOYOTA IN SPRING



ALWAYS A
BETTER WAY

At Toyota, we always aim to produce the safest and most reliable cars we can. Our spring Toyota driver's card is designed to give you a quick and easy guide to get the best out of your Toyota, with simple to follow instructions that will help you maintain a safe and reliable car for many years.

WASH WINTER AWAY



- Wash off dirt, grime and corrosive salt that may have built up.
- Using warm water and Toyota Car Care products, begin cleaning from the roof of your Toyota, working down.
- Hose off stubborn dirt under all wheel arches.
- **Pay particular attention to cleaning the underside of all doors and door-sills.**

CHECK TYRES



- If you switched to winter tyres in the autumn, now is the time to switch back to summer tyres.
- Check your tyre pressures against those recommended in your Toyota owner's manual.
- Check tyre treads and side walls for cracks and damage with your local authorised repairer.
- Minimum legal tyre tread depth is 1.6mm.

Turn wheel to inspect inner shoulder of the tyres.

LET YOUR LOCAL TOYOTA AUTHORISED REPAIRER HELP

✓ BATTERY

We will check if connections are clean, tight and corrosion free and replace your battery if necessary.

✓ EXHAUST SYSTEM

Exhaust leaks can be dangerous if not corrected quickly. We will check for leaks, damage and broken exhaust mounts and supports.

✓ BRAKE SYSTEM

The brake linings, rotors and drums should be checked at each oil change.

✓ HOSES & BELTS

We will check these are not cracked, brittle, frayed, loose or showing signs of excessive wear.

✓ AIR CONDITIONING SYSTEM & CABIN AIR FILTERS

For correct heating and cooling performance, we will inspect these to maintain interior comfort and safety in your Toyota.

✓ STEERING & SUSPENSION SYSTEM

For correct heating and cooling performance, we will inspect these to maintain interior comfort and safety in your Toyota.

✓ FLUIDS & FILTERS

We will inspect engine oil, power steering, brake, transmission and windscreen washer fluids, along with the fuel filter to optimise fuel economy and reduce emissions.

TOYOTA CARE: LET US HELP KEEP SUMMER FUN



TOYOTA

ALWAYS A
BETTER WAY

Summer's finally here, so what better way to enjoy the holidays than with sun-drenched day trips and long-distance adventures behind the wheel of your Toyota? And although you won't encounter the obvious dangers of winter driving, higher outside temperatures and long traffic queues can put higher demands on both you and your car. Check your car before you take a trip and visit a Toyota Authorised Repairer to ensure that nothing can take the shine off your summer fun.

WHAT TO CHECK IN YOUR CAR BEFORE SUMMER

TYRE PRESSURE & CONDITION

MIN 1.6 mm



Check all tyres for cracks and damage and the tyre pressure. Minimum legal tyre tread depth limit is 1.6 mm. Turn front wheels to inspect the inner shoulder of tread.

OIL MAINTENANCE



Locate dipstick. Clean dipstick and then read oil level between dipstick markers. Oil should be transparent and clean when checked.

WIPERS AND SCREEN WASH



Check wiper rubbers for splits. Replace wipers if they smear, chatter or squeak. Regularly check screen wash levels and re-fill using Toyota windscreen fluid.

EXTERIOR LIGHTS



Inspect all headlights regularly. Don't forget to check that brake lights, fog lights and indicators are all operating too. Give the light covers a regular clean.

EMERGENCY KIT



Be prepared for the unexpected and always carry an emergency kit according to your country legislation. This should include a first aid kit, warning triangle and safety jacket.

PACK WELL



Keep a clear unobstructed view out of the rear window. For all those holiday extras, fit a Toyota bicycle holder or a Toyota roof rack.

YOUR TOYOTA AUTHORISED REPAIRER'S HERE TO HELP

CHECK AIR CON



Summer is when you need the cool breeze of your air conditioning the most. Your A/C system should be inspected regularly by a Toyota Authorised Repairer.

BATTERY



Toyota batteries are designed to perform at the optimum level in all the seasons. Ask your Toyota Authorised Repairer to check and replace the battery if necessary.

BRAKES



It is imperative that the brakes on your Toyota are inspected regularly. Visit a Toyota Authorised Repairer immediately if the pedal feel or height changes, a warning light appears or they make a noise.



TOYOTA

ALWAYS A
BETTER WAY

WHAT TO CARRY IN YOUR CAR IN THE SUMMER

The holiday season is fast approaching and that means sun-drenched day trips and long-distance adventures behind the wheel of your Toyota. From summer essentials that you can't afford to leave behind, to the more technical areas of your Toyota that should be checked at an authorised repairer, our simple guide should help to keep you cool under the collar this summer.

WHAT'S HOT FOR YOUR CAR THIS SUMMER



SUMMER ESSENTIALS

SUN GLASSES / HAT / SUN LOTION



WATER & SNACKS



GAMES FOR THE KIDS

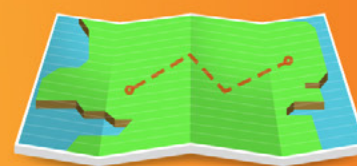


WINDSCREEN SUN SHADE



PACK WITH CARE

DON'T OBSTRUCT YOUR MIRRORS



ROAD MAPS & LOCAL DRIVING REGULATIONS

KEEP COOL WITH THESE TOYOTA AUTHORISED REPAIRER CHECKS



FLUIDS

ENGINE OIL / POWER STEERING /
TRANSMISSION / BRAKE / WINDSCREEN CLEANER



AIR CONDITIONING



WIPERS AND LIGHTS

This concise chart is not intended as a replacement for the owner's manual of your vehicle or of the accessory. We advise you to carefully read through the owner's manual. Toyota accepts no liability for the content of this chart and/or for the consequences of any actions taken on the basis of the information provided.

CARING FOR YOU AND YOUR TOYOTA IN AUTUMN



TOYOTA

ALWAYS A
BETTER WAY

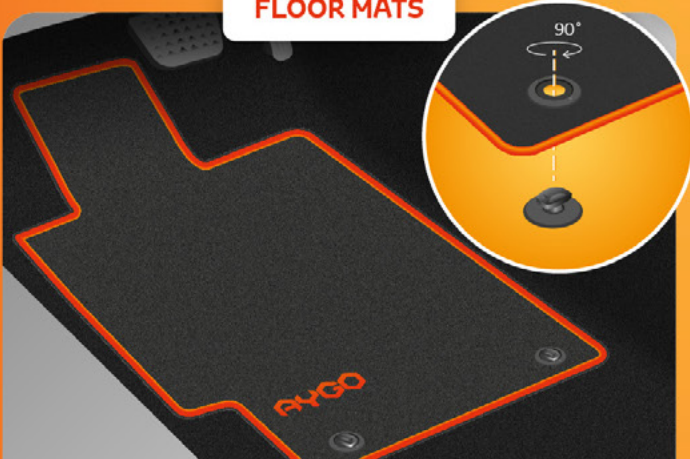
At Toyota, we always aim to produce the safest and most reliable cars we can. Our autumn driver's card is designed to give you a quick and easy guide to get the best out of your Toyota, with simple-to-follow instructions that will help you to maintain a safe and reliable car for many years.

AUTUMN SUN



- The sun sits noticeably lower in the sky in autumn and can be a hazard for drivers and pedestrians
- Dazzle and glare from the sun will be exaggerated by a dirty or damaged windscreen
- Make sure the windscreen is spotlessly clean inside and out and have any chips or scratches repaired
- Turn on your headlights in the twilight hours between 16:00 and 20:00, while pedestrians can alert drivers much earlier of their presence by wearing reflective clothing

FLOOR MATS



- It's important to check the condition of the floor mats
- Replace them if any holes, tears or damage appear
- Ensure the mats are attached using the correct fixings to avoid the risk of them moving out of place
- Tailored textile mats provide comfort and style, whilst rubber mats are hard wearing and easy to clean

WIPER BLADES MAINTENANCE



- Replace wiper blades if they smear, streak, chatter or squeak
- Check for any splits to the wiper rubbers
- Check windscreen washer reservoir levels regularly

LET YOUR AUTHORISED REPAIRER HELP

✓ COOLANT

Overheating can cause serious damage to your engine. We will make sure coolant levels are correct and inspect for any leaks from the system.

✓ HOSES & BELTS

We will check these are not cracked, brittle, frayed, loose or showing signs of excessive wear.

✓ AIR CONDITIONING & CABIN AIR FILTERS

For the correct heating and cooling performance along with blocking air pollutants from entering the cabin, these will be inspected to maintain interior comfort and safety.

✓ BRAKE SYSTEM

You should have your brakes inspected regularly. A Toyota Authorised Repairer will check your brake pads, discs and brake fluid level.

CARING FOR YOU AND YOUR TOYOTA



TOYOTA

ALWAYS A
BETTER WAY

At Toyota, our number one priority is to produce the safest and most reliable cars we can. Our Toyota driver's card is designed to give you a quick and easy guide to maximise enjoyment from your Toyota, with simple to follow instructions that will help you maintain a safe and reliable car for many years.

SEAT POSITIONING



- Depress pedals fully keeping hips level with thighs.
 - Seat back at 100° - 110°.
 - Hands on the wheel at 10-2.
 - Arms slightly bent and wrists straight.
- Drive with both hands to maintain control.

Pay attention to your driving posture and take regular breaks.

TYRE MAINTENANCE



- Check tyre for cracks & damage.
- Minimum legal limit is 1.6mm.
- Use wear bars moulded between the grooves as a reference point.

Turn wheel to inspect the inner shoulder of tyre.

OIL MAINTENANCE



- Locate dipstick as shown.
- Clean oil from end of dipstick.
 - Replace dipstick.
- Remove and read oil level between dipstick markers.

Oil should be transparent and clean when checked, otherwise renew.

TYRE INFLATION



Correctly inflated Over inflated Under inflated

- Locate correct tyre pressure in owner's manual or on door pillar.
- Check tyre pressure with gauge.
- Add or remove air as required.

Incorrectly inflated tyres can lead to excessive wear to centre and outer edges. Poorly inflated pressures can cause steering to pull to one side.

CARING FOR YOU AND YOUR TOYOTA



TOYOTA

ALWAYS A
BETTER WAY

At Toyota, our number one priority is to produce the safest and most reliable cars we can. Our Toyota driver's card is designed to give you a quick and easy guide to maximise enjoyment from your Toyota, with simple to follow instructions that will help you maintain a safe and reliable car for many years.

WARNING LIGHTS



- Red lights - Danger. Stop immediately and refer to owner's manual.
 - Amber lights - System malfunction. Proceed with caution. Have vehicle checked by a technician immediately.
 - Green lights - Normal operation or function engaged.
- All lights appear for a system check when starting up.**

WIPER MAINTENANCE



- Check windscreen washer levels regularly.
 - Use washer fluid when re-filling reservoir
 - Replace wipers if they smear, streak, chatter or squeak.
 - Check for splits to rubber.
 - Replace just rubber or entire blade.
- Keep headlights clean to improve visibility and reduce glare.**

SAVING FUEL



- Remove unnecessary weight from the boot.
 - Ensure car's tyres are correctly inflated.
 - Close windows and sunroof where possible.
 - Choose routes where you can maintain a constant speed rather than stop start in traffic.
 - Remove roof bars and bike holders if not needed.
- Drive smoothly - plan steady braking and accelerating.**

DRIVING WITHIN THE EU



- Always carry important documents with you (Registration document, insurance, passport).
 - Carry a warning triangle, reflective jackets, first aid kit.
 - Keep replacement headlamp bulbs in your boot.
 - Drive on the left in the UK, Channel Islands, Ireland, Malta.
- Make sure you get to know the driving laws in the country you are visiting.**